

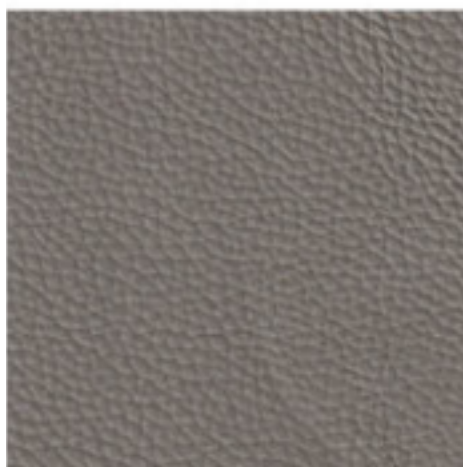


COLOUR GUIDE

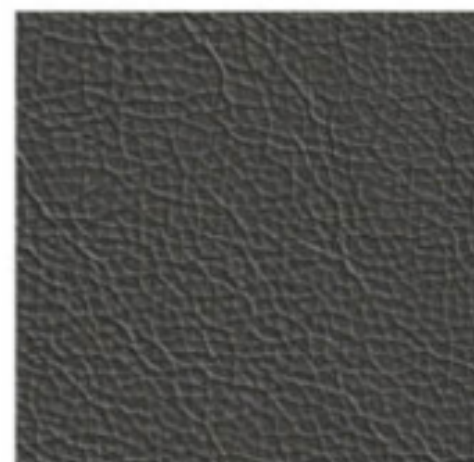
ESSENZA LEATHER



E201 Nero



E202 Stone



E203 Graphite



E204 Espresso



E205 Ivory



E206 Pebble



E207 Frost



E208 Sky

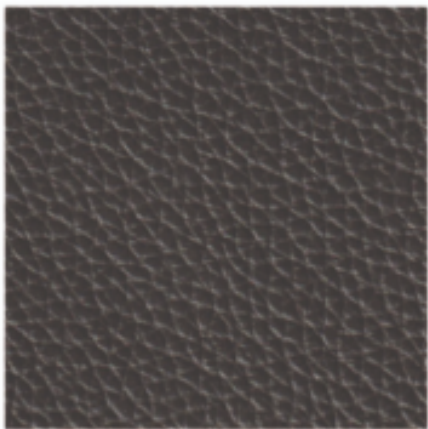
ESSENZA is a top grain, pigmented, upholstery leather with a thickness between 0.9-1.0 mm. It has been corrected, and grain embossed to create a uniform appearance in both color and grain texture.

The pigmented and protective water based top-coat applied on ESSENZA minimizes stains. ESSENZA has a nice grain structure with a good touch and a robust hand finish.

The careful processing method and protective top layer enhance the performance and longevity of this leather quality.

ESSENZA is therefore all about value and carefree maintenance.

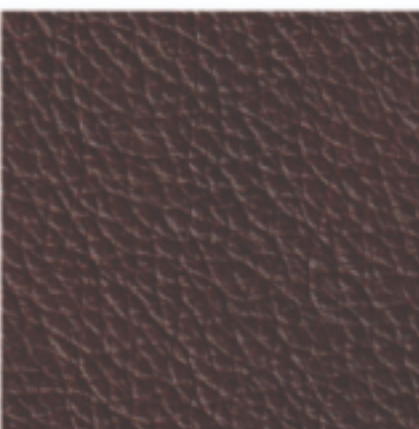
AURORA LEATHER



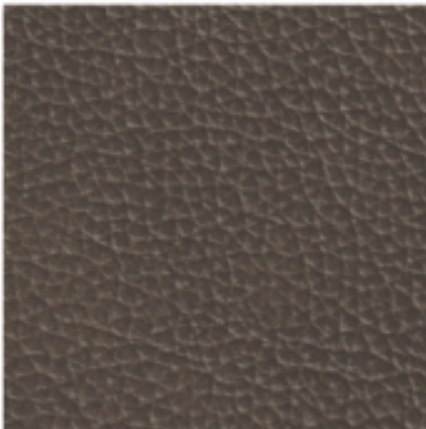
A301 Shadow



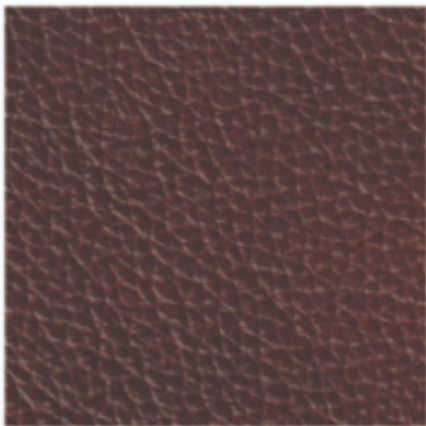
A302 Taupe



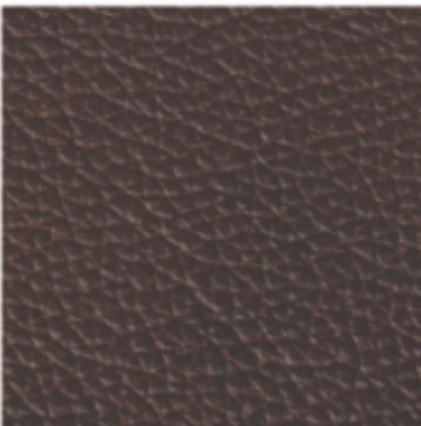
A303 Rosewood



A304 Olive



A305 Caramel



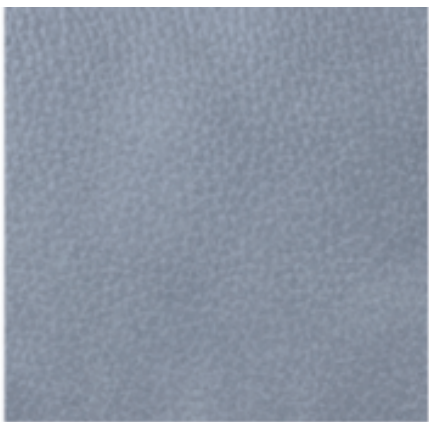
A306 Havana



A307 Limestone



A308 Pearl



A309 Denim

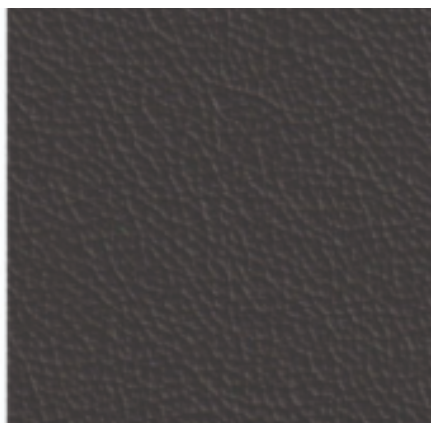
AURORA is a natural milled top grain, pigmented, upholstery leather with a thickness of approximately 1.1 mm. It has been slightly corrected to give it a uniform pattern.

Its unique tricolor effect gives the leather depth and life with a distinguished silky patina. AURORA has a pigmented and protective water-based topcoat with a soft and slight waxy touch.

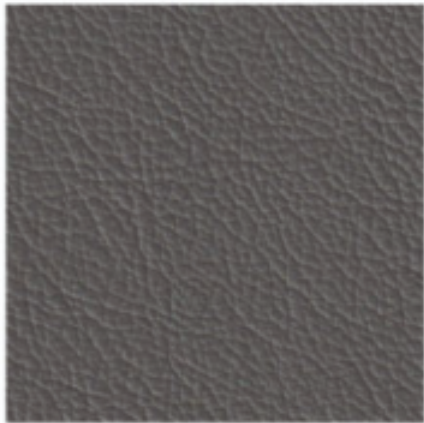
High quality raw hides combined with a careful processing method and protective top layer enhances the performance and longevity of AURORA. This leather is rich and vivid in color and embodies an amazing organic experience.

AURORA is a great choice for those who are looking for a rich and vivid leather that is easy to maintain.

GRACE LEATHER



G401 Tuxedo



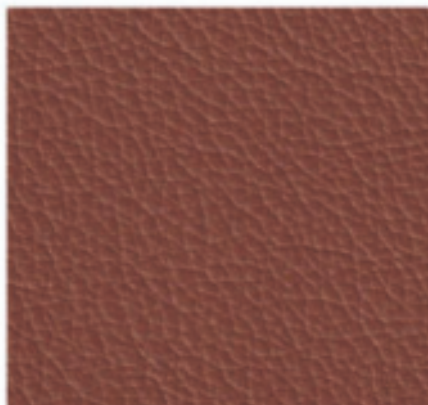
G403 Iron



G404 Fog



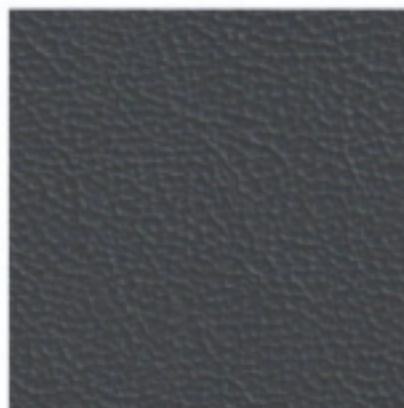
G405 Fango



G406 Cognac



G407 Coffee



G408 Midnight



G409 Ferrari



G410 Snow



G411 Sandstone



G412 Ash



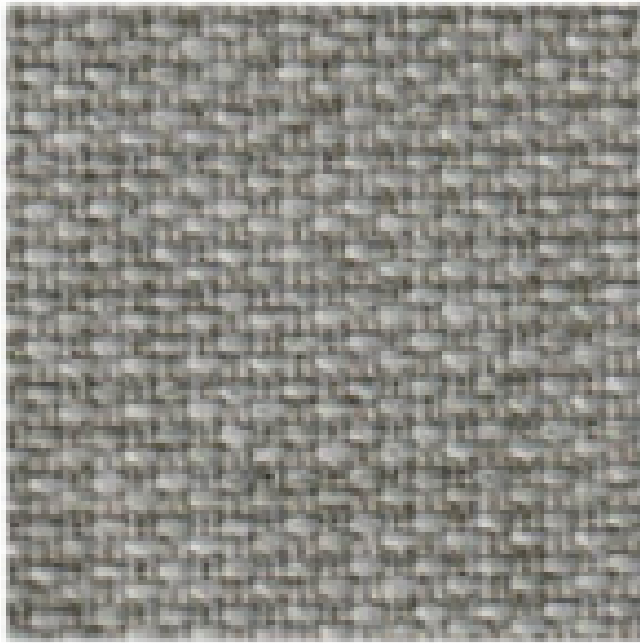
G413 Mint

GRACE is a premium aniline dyed top grain upholstery leather developed for comfort and graceful look.

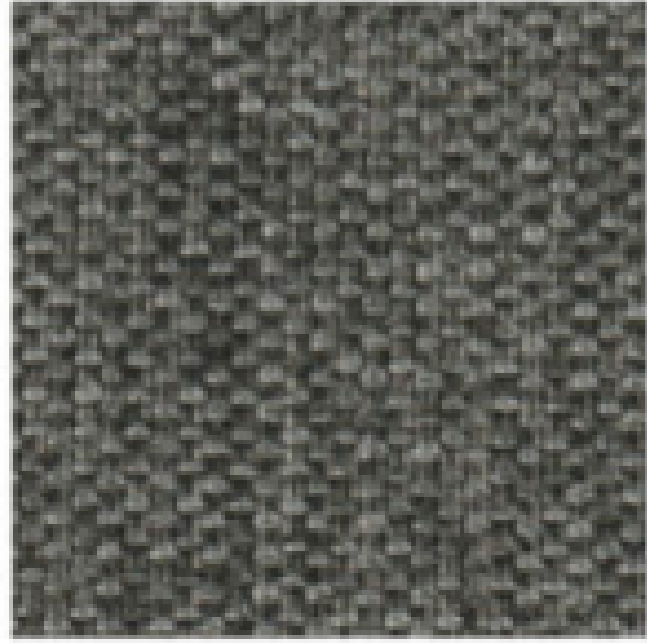
The advanced tanning process done on GRACE retains the natural subtle fine grain characteristics with a thickness of approximately 1.0mm. High quality raw hides combined with a careful processing method and protective top layer enhances the performance and longevity of GRACE. The soft feel coupled with a semi-matt appearance adds to the luxurious and stylish personality.

GRACE is the ideal choice for those who wish to enjoy pleasure of comfortable and soft leather that is easy to clean and maintain.

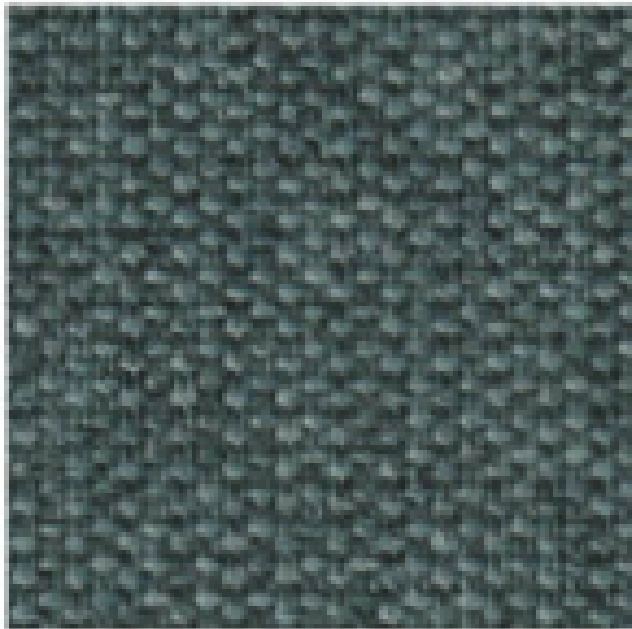
ULTRA FABRIC



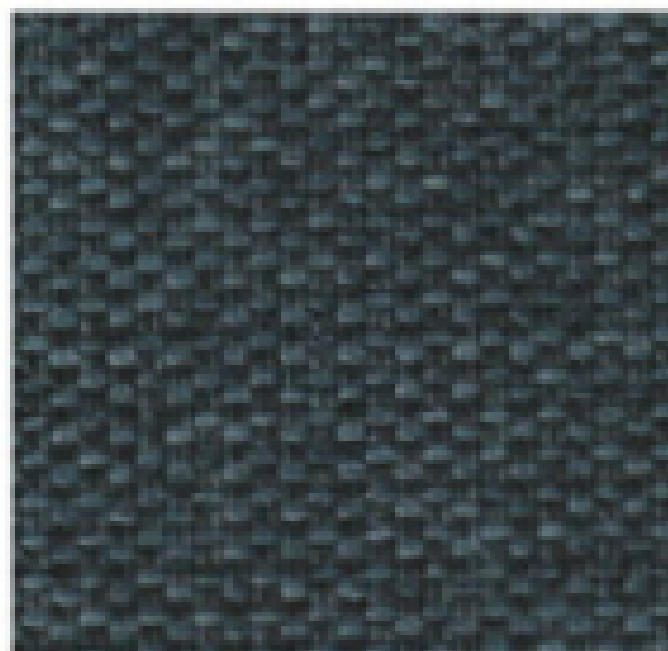
FX02 Nickel



FX04 Charcoal



FX06 Storm

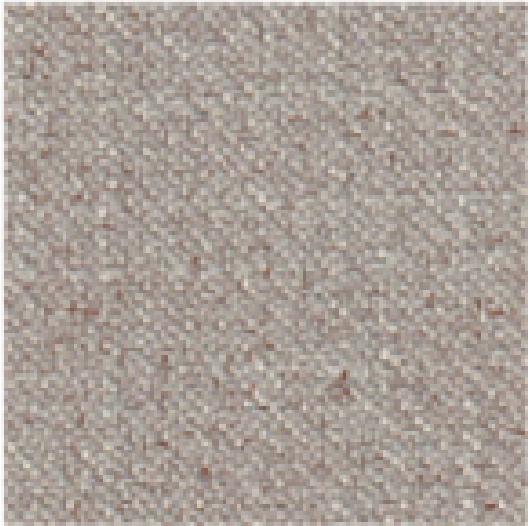


FX10 Twilight

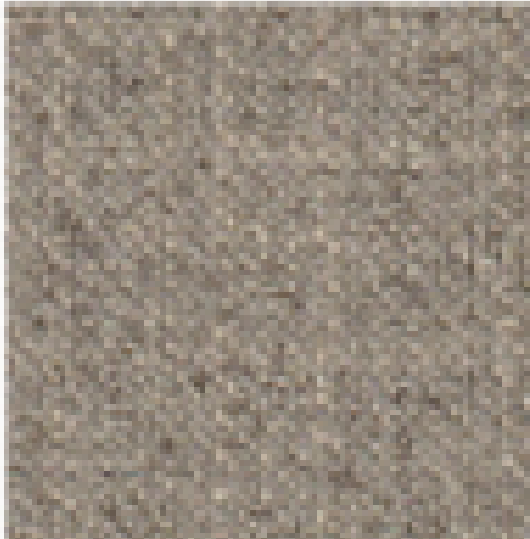
ULTRA is a highly durable fabric with both moisture repellent and stain resistant features. The protection barrier enhances the characteristics of ULTRA and ensure your fabric stays cleaner and fresher for a long time. ULTRA has a nice touch with a distinctive tone-in-tone pattern.

- Stain resistant
- Water repellent
- Durable
- Barrier protection
- Easily cleaned

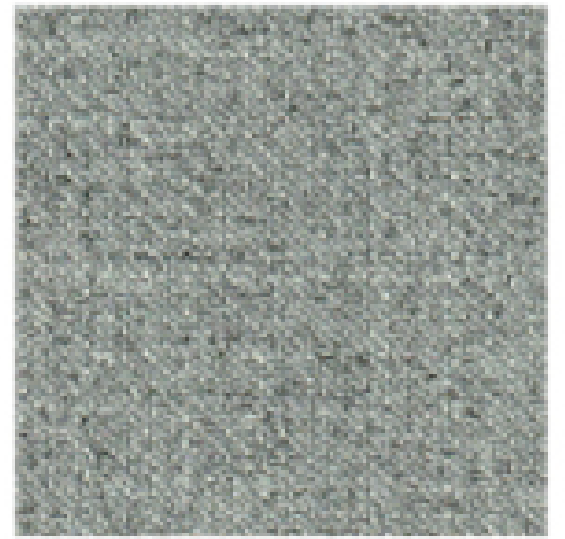
HOPE FABRIC



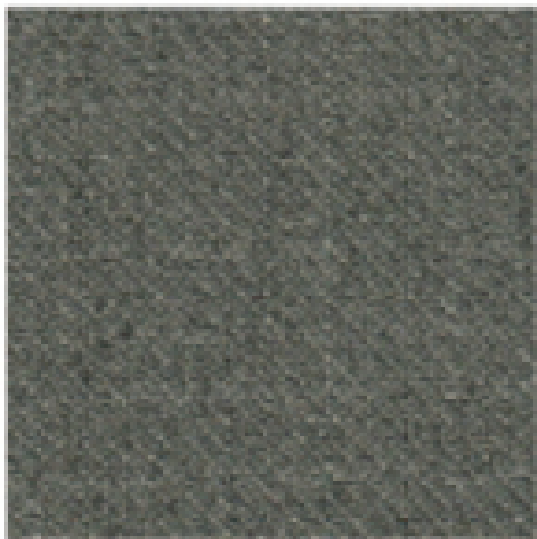
FH40 Charcoal



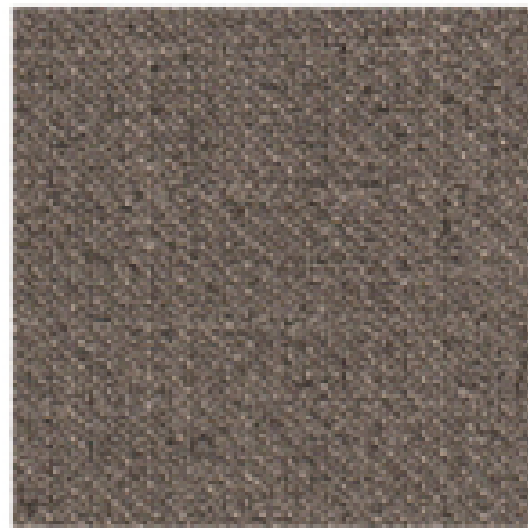
FH41 Oat



FH42 Seaglass



FH43 Smoke



FH44 Cafe

HOPE is a sustainable high-performance fabric with both moisture repellent and stain resistant features. HOPE looks and feels beautiful while helping to divert plastics from landfills to create a more sustainable future. HOPE is using an average of 30% recycled fibers. HOPE performance treatment ensures your fabric stays cleaner and fresher for a long time.

- Recycled fibers
- Stain resistant
- Water repellent
- Durable
- Barrier protection
- Easily cleaned

ECHO FABRIC



FD02 Arctic



FD02 Flax



FD06 Charcoal



FD08 Midnight



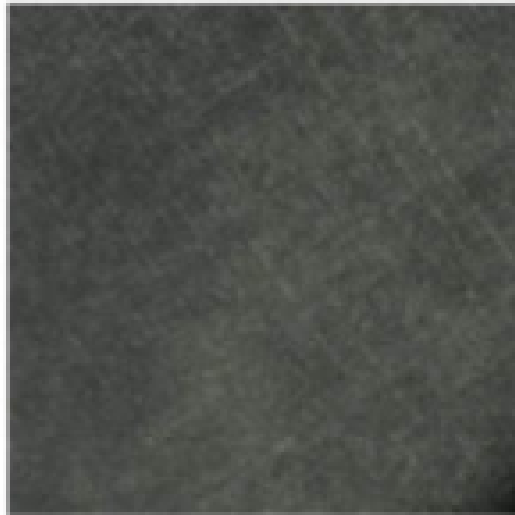
FD10 Licorice

Echo has been a staple member of our premium suede collection from the moment it was introduced. This classic small-herringbone pattern, with the subtle contrast of color woven into the design, is offered in a lush array of colors, and carries with it a sophisticated look and a high-performance story, delivering both elegance and practicality for contemporary family living.

ADORE FABRIC



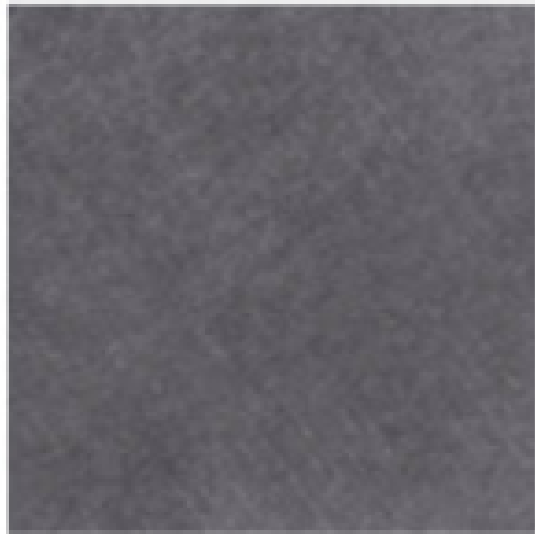
FA03 Sand



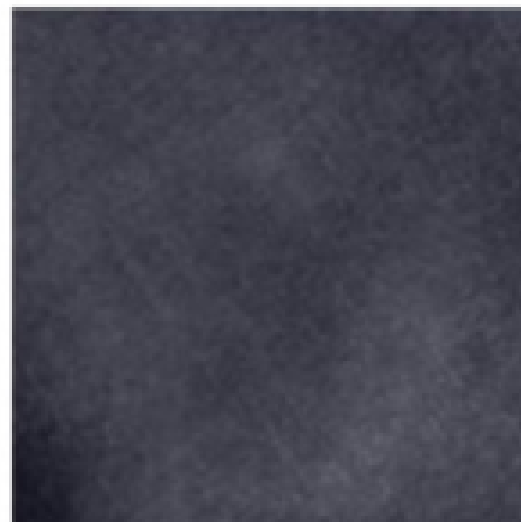
FA11 Winter Moss



FA12 Marine



FA16 Grey



FA17 Anthracite

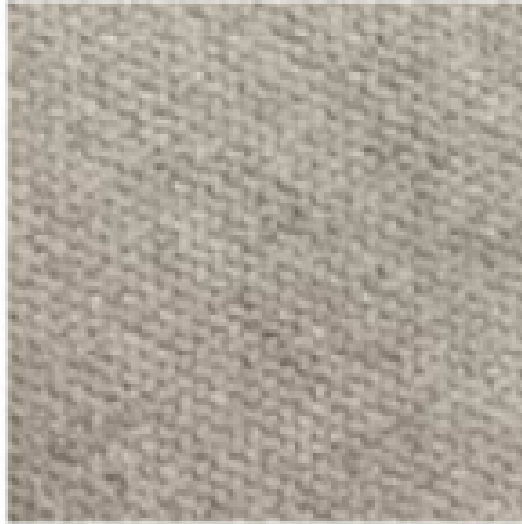
ADORE is a very durable fabric and provides a very comfortable sitting experience. ADORE is a velvet fabric that is soft against the skin and with a nice luxury shine. The fabric is developed with technology that limits fluid absorption. Spilled liquids (water, coffee, wine) are formed into droplets and does not penetrate the fabric fibers.

- Reduces fluid absorption
- Makes it easy to keep clean
- Minimizes the risk of the fabric getting dirty

ENJOY FABRIC



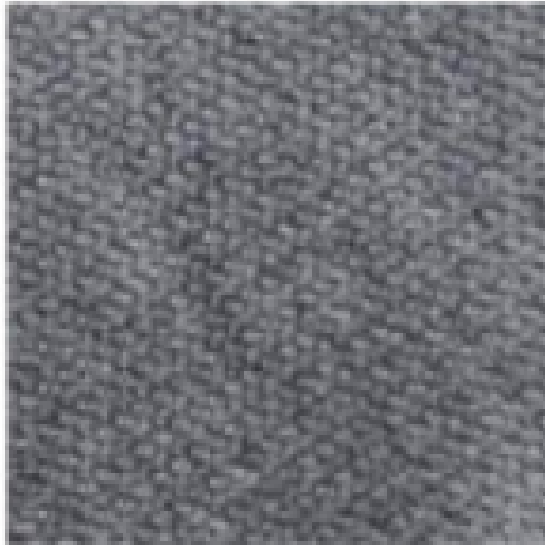
FE04 Brown



FE07 Rabbit



FE08 Stone



FE23 Ash



FE24 Graphite

ENJOY is a very durable and soft microfiber fabric developed with technology that limits fluid absorption. Spilled liquids (water, coffee, wine) are formed into droplets and does not penetrate the fabric fibers.

- Reduces fluid absorption
- Makes it easy to keep clean
- Minimizes the risk of the fabric getting dirty